



## Test Report

No. BEC2100769903

Date: 02 Apr 2021

Page 1 of 11

The following sample(s) was/were submitted and identified on behalf of the clients as : APET sheet (GAG) sheet

SGS Job No. : 21-000684

Date of Sample Received : 03 Mar 2021

Testing Period : 03 Mar 2021 - 09 Mar 2021

Test Requested : Selected test(s) as requested by client.

Test Method : Please refer to next page(s).

Test Results : Please refer to next page(s).

Conclusion : Based on the performed tests on submitted sample(s), the results of Lead, Mercury, Cadmium, Hexavalent chromium, Polybrominated biphenyls (PBBs), Polybrominated diphenyl ethers (PBDEs) and Phthalates such as Bis(2-ethylhexyl) phthalate (DEHP) , Butyl benzyl phthalate (BBP), Dibutyl phthalate (DBP) , and Diisobutyl phthalate (DIBP) comply with the limits as set by RoHS Directive (EU) 2015/863 amending Annex II to Directive 2011/65/EU.

Signed for and on behalf of  
SGS-CSTC Standards Technical Services Co., Ltd.

---

Approved Signatory



## Test Report

No. BEC2100769903

Date: 02 Apr 2021

Page 2 of 11

Test Results :

Test Part Description :

Specimen No.	SGS Sample ID	Description
SN1	321-007699.001	Transparent plastic

Remarks :

- (1) 1 mg/kg = 0.0001%
- (2) MDL = Method Detection Limit
- (3) ND = Not Detected ( < MDL )
- (4) "-" = Not Regulated

### RoHS Directive (EU) 2015/863 amending Annex II to Directive 2011/65/EU

Test Method : With reference to IEC 62321-4:2013+AMD1:2017, IEC62321-5:2013, IEC62321-7-2:2017, IEC 62321-6:2015 and IEC62321-8:2017, analyzed by ICP-OES, UV-Vis and GC-MS.

<u>Test Item(s)</u>	<u>Limit</u>	<u>Unit</u>	<u>MDL</u>	<u>001</u>
Cadmium (Cd)	100	mg/kg	2	ND
Lead (Pb)	1000	mg/kg	2	ND
Mercury (Hg)	1000	mg/kg	2	ND
Hexavalent Chromium (Cr(VI))	1000	mg/kg	8	ND
Sum of PBBs	1000	mg/kg	-	ND
Monobromobiphenyl	-	mg/kg	5	ND
Dibromobiphenyl	-	mg/kg	5	ND
Tribromobiphenyl	-	mg/kg	5	ND
Tetrabromobiphenyl	-	mg/kg	5	ND
Pentabromobiphenyl	-	mg/kg	5	ND
Hexabromobiphenyl	-	mg/kg	5	ND
Heptabromobiphenyl	-	mg/kg	5	ND
Octabromobiphenyl	-	mg/kg	5	ND
Nonabromobiphenyl	-	mg/kg	5	ND
Decabromobiphenyl	-	mg/kg	5	ND
Sum of PBDEs	1000	mg/kg	-	ND
Monobromodiphenyl ether	-	mg/kg	5	ND
Dibromodiphenyl ether	-	mg/kg	5	ND
Tribromodiphenyl ether	-	mg/kg	5	ND
Tetrabromodiphenyl ether	-	mg/kg	5	ND
Pentabromodiphenyl ether	-	mg/kg	5	ND
Hexabromodiphenyl ether	-	mg/kg	5	ND

## Test Report

No. BEC2100769903

Date: 02 Apr 2021

Page 3 of 11

<u>Test Item(s)</u>	<u>Limit</u>	<u>Unit</u>	<u>MDL</u>	<u>001</u>
Heptabromodiphenyl ether	-	mg/kg	5	ND
Octabromodiphenyl ether	-	mg/kg	5	ND
Nonabromodiphenyl ether	-	mg/kg	5	ND
Decabromodiphenyl ether	-	mg/kg	5	ND
Di-butyl Phthalate (DBP)	1000	mg/kg	50	ND
Benzyl Butyl Phthalate (BBP)	1000	mg/kg	50	ND
Bis(2-ethylhexyl) Phthalate(DEHP)	1000	mg/kg	50	ND
Diisobutyl Phthalates (DIBP)	1000	mg/kg	50	ND

### Notes :

(1) The maximum permissible limit is quoted from RoHS Directive (EU) 2015/863.

(2) IEC 62321 series is equivalent to EN 62321 series

[https://www.cenelec.eu/dyn/www/f?p=104:30:1742232870351101:::FSP\\_ORG\\_ID,FSP\\_LANG\\_ID:1258637,25](https://www.cenelec.eu/dyn/www/f?p=104:30:1742232870351101:::FSP_ORG_ID,FSP_LANG_ID:1258637,25).

(3) The restriction of DEHP, BBP, DBP and DIBP shall apply to medical devices, including in vitro medical devices, and monitoring and control instruments, including industrial monitoring and control instruments, from 22 July 2021.

### Phthalates

Test Method : With reference to EN14372: 2004, analysis was performed by GC-MS.

<u>Test Item(s)</u>	<u>CAS NO.</u>	<u>Unit</u>	<u>MDL</u>	<u>001</u>
Dibutyl Phthalate (DBP)	84-74-2	%	0.003	ND
Benzylbutyl Phthalate (BBP)	85-68-7	%	0.003	ND
Bis(2-ethylhexyl) Phthalate(DEHP)	117-81-7	%	0.003	ND
Diisononyl Phthalate (DINP)	28553-12-0/68515-48-0	%	0.01	ND
Di-n-octyl Phthalate (DNOP)	117-84-0	%	0.003	ND
Diisodecyl Phthalate (DIDP)	26761-40-0/68515-49-1	%	0.01	ND

### Polycyclic aromatic hydrocarbons (PAHs)

Test Method : With reference to AfPS GS 2019:01 PAK, analysis was performed by GC-MS.



## Test Report

No. : BEC2100769903

Date: 02 Apr 2021

Page 4 of 11

<u>Test Item(s)</u>	<u>Unit</u>	<u>MDL</u>	<u>001</u>
Naphthalene(NAP)	mg/kg	0.1	ND
Phenanthrene(PHE)	mg/kg	0.1	ND
Anthracene(ANT)	mg/kg	0.1	ND
Fluoranthene(FLT)	mg/kg	0.1	ND
Pyrene(PYR)	mg/kg	0.1	ND
Benzo(a)anthracene(BaA)	mg/kg	0.1	ND
Chrysene(CHR)	mg/kg	0.1	ND
Benzo(b)fluoranthene(BbF)	mg/kg	0.1	ND
Benzo(j)fluoranthene(BjF)	mg/kg	0.1	ND
Benzo(k)fluoranthene(BkF)	mg/kg	0.1	ND
Benzo(a)pyrene(BaP)	mg/kg	0.1	ND
Benzo(e)pyrene(BeP)	mg/kg	0.1	ND
Indeno(1,2,3-c,d)pyrene(IPY)	mg/kg	0.1	ND
Dibenzo(a,h)anthracene(DBA)	mg/kg	0.1	ND
Benzo(g,h,i)perylene(BPE)	mg/kg	0.1	ND
Sum of Phenanthrene, Pyrene, Anthracene, Fluoranthene	mg/kg	-	ND
Sum of 15 PAHs	mg/kg	-	ND

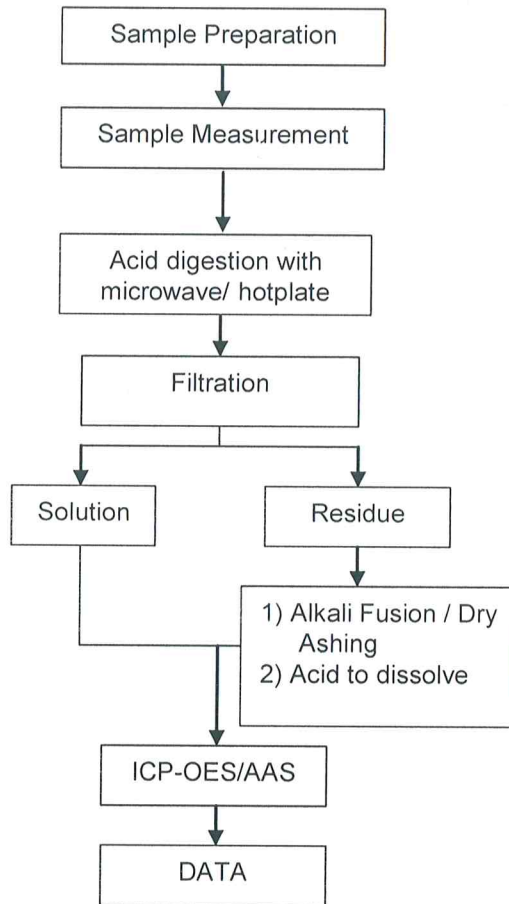
AfPS ( German commission for Product Safety ) : GS PAHs requirements

Parameter	Category 1	Category 2		Category 3	
	Materials, that are destined in mouth closed or material in toys according to Directive 2009/48 EC or materials in articles for use by children up to 3 years with longer term according to skin contact (longer than 30s) at intended use	Materials not covered in category 1, with foreseeable contact to skin longer than 30 seconds (long-term skin contact) or repeated short term skin contact at intended or foreseeable use		Materials that do not fall in category 1 or 2, with foreseeable contact to skin up to 30 seconds (short-term skin contact) at intended or foreseeable use	
		Used by Children (<14 years)	Other Consumer Products	Used by Children (<14 years)	Other Consumer Products
Benzo(a)pyrene (BaP) mg/kg	< 0.2	< 0.2	< 0.5	< 0.5	< 1
Benzo(e)pyrene (BeP) mg/kg	< 0.2	< 0.2	< 0.5	< 0.5	< 1
Benzo(a)anthracene (BaA) mg/kg	< 0.2	< 0.2	< 0.5	< 0.5	< 1
Benzo(b)fluoranthene (BbF) mg/kg	< 0.2	< 0.2	< 0.5	< 0.5	< 1
Benzo(j)fluoranthene (BjF) mg/kg	< 0.2	< 0.2	< 0.5	< 0.5	< 1
Benzo(k)fluoranthene (BkF) mg/kg	< 0.2	< 0.2	< 0.5	< 0.5	< 1
Chrysene (CHR) mg/kg	< 0.2	< 0.2	< 0.5	< 0.5	< 1
Dibenzo(a,h)anthracene (DBA) mg/kg	< 0.2	< 0.2	< 0.5	< 0.5	< 1
Benzo(g,h,i)perylene (BPE) mg/kg	< 0.2	< 0.2	< 0.5	< 0.5	< 1
Indeno(1,2,3-cd)pyrene (IPY) mg/kg	< 0.2	< 0.2	< 0.5	< 0.5	< 1
Phenanthrene (PHE), pyrene (PYR), anthracene (ANT), fluoranthene (FLT), mg/kg	< 1 Sum	< 5 Sum	< 10 Sum	< 20 Sum	< 50 Sum
Naphthalene (NAP) mg/kg	< 1	< 2		< 10	
Sum of 15 PAHs	<1	< 5	< 10	< 20	< 50

ATTACHMENTS

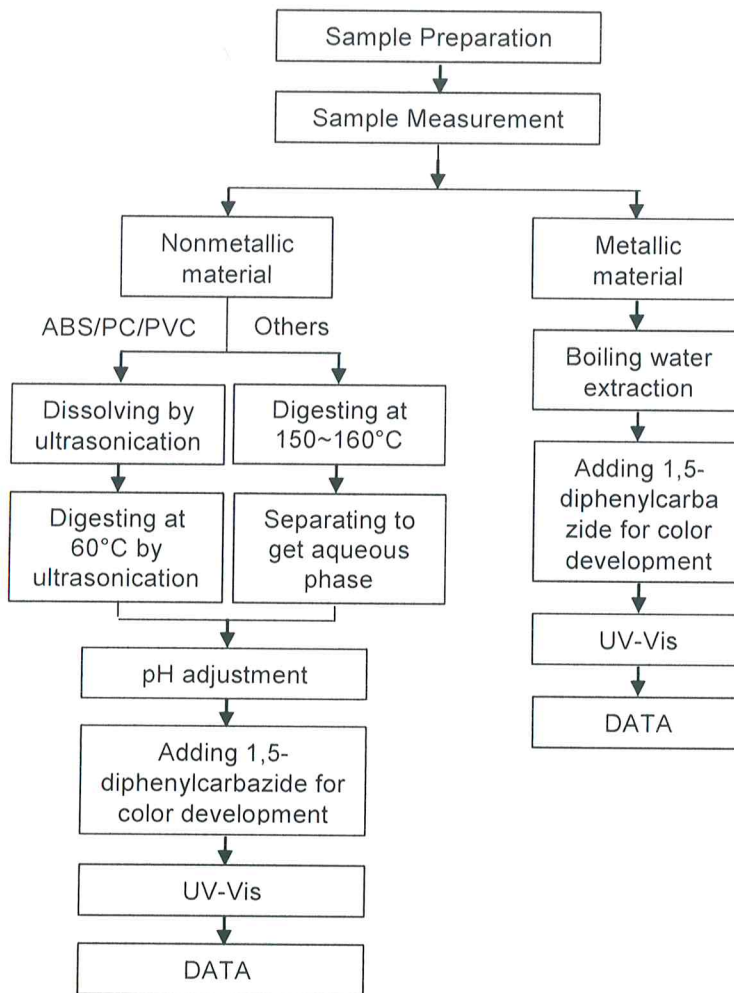
### Elements (IEC62321) Testing Flow Chart

1) These samples were dissolved totally by pre-conditioning method according to below flow chart.



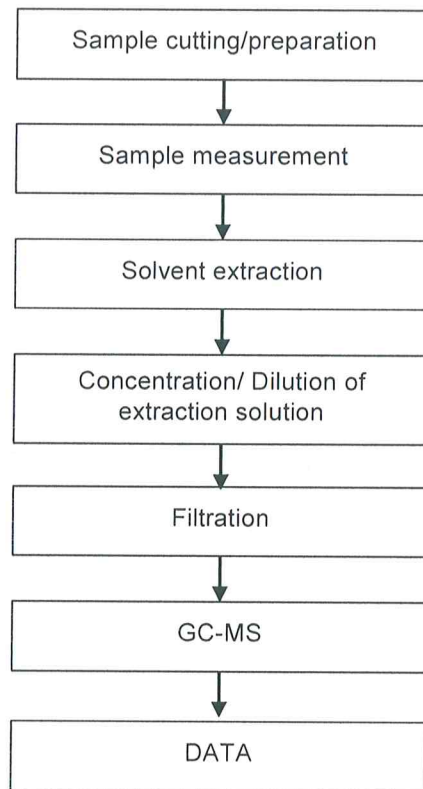
ATTACHMENTS

Hexavalent Chromium (Cr(VI)) Testing Flow Chart



ATTACHMENTS

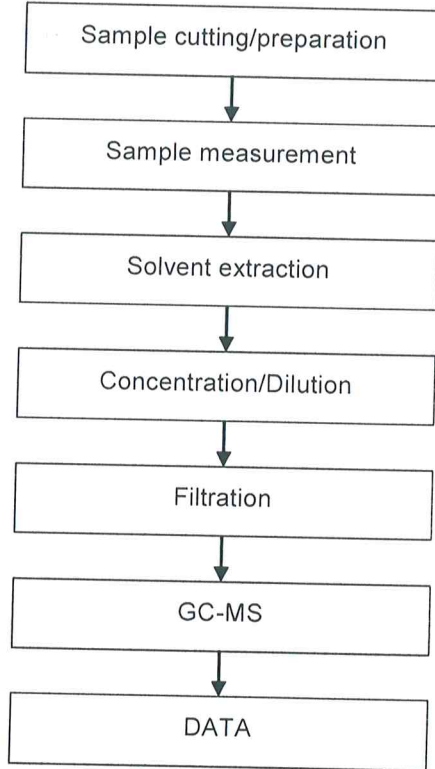
### PBBs/PBDEs Testing Flow Chart





ATTACHMENTS

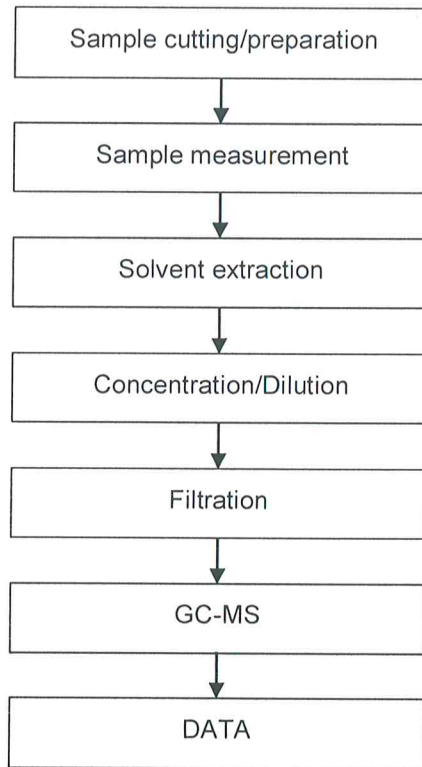
### Phthalates Testing Flow Chart





ATTACHMENTS

PAHs Testing Flow Chart



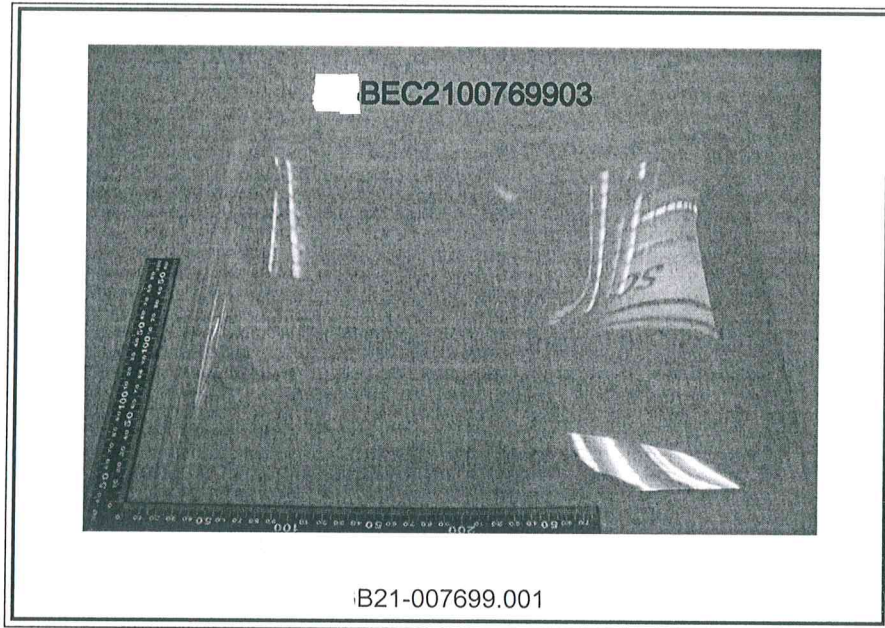
## Test Report

No. BEC2100769903

Date: 02 Apr 2021

Page 11 of 11

Sample photo:



SGS authenticate the photo on original report only

\*\*\* End of Report \*\*\*

